

Climate Change Adaptation Resource Pathway (ARP)

Land Use, Regional and Urban Planning



Welcome explorers! The Climate Change Adaptation Resource Pathway (ARP) is designed to help adaptation practitioners at all levels traverse the vast array of information available on land use, regional and urban planning based climate change adaptation solutions. The ARP contains **5 steps**, each providing a curated list of resources and tools to help you navigate along your adaptation journey and build resilience to our changing climate:

EXPLORE

Peruse key terms, FAQ's and various resources to build your knowledge on key adaptation concepts, tools and best practices.

LEARN

Strengthen your knowledge and expertise by exploring climate change adaptation courses, credentials and training opportunities.

NETWORK

Tap into existing knowledge-sharing networks such as communities of practice in order to connect with others working in the field.

ACT

Learn how others are implementing adaptation actions on-the-ground through case studies and real world examples of implementation.

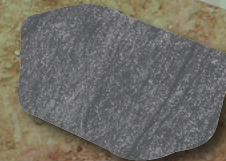
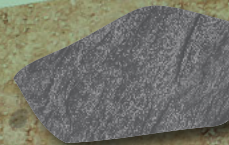
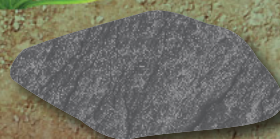
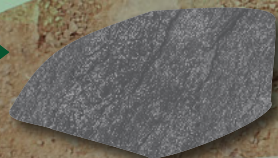
REFLECT

Take stock of your adaptation journey so far and learn ways to measure the impact of your actions.

You can follow the pathway from start to finish or jump between the different steps based on your current goals.



Click on one of the stepping stones below to start your journey down the Adaptation Resource Pathway.

The ARP is an interactive resource!
Click on the Scenic Lookout icon and
signpost below to try it out.





How to use the ARP

- 1) **Download the ARP and open the PDF on your computer using Adobe Acrobat Reader.**
- 2) Click on the stepping stones along the bottom of the page to travel to the Explore, Learn, Network, Act and Reflect steps. Each step contains clickable features that reveal resources and information. You will recognize when something is clickable/interactive as it will change colour as you move your cursor over it.
- 3) Use the signposts to access different sections within each step along the Pathway.
- 4) At any point, click on the log home icon  to bring you back to the intro page.
- 5) The resources in this ARP are web-based and will require internet access and a web-browser to open.
- 6) If a resource was produced outside of Canada, you will see (international) in the resource title.
- 7) To access the print version of the ARP, click on the print button  on the back cover.

The following icons are used throughout to highlight:



Low-carbon resilience resources



Notes about cost



International resources



Tips for using that resource

The ARP is an interactive resource!
Click on the Scenic Lookout icon and
signpost below to try it out.





About the ARP

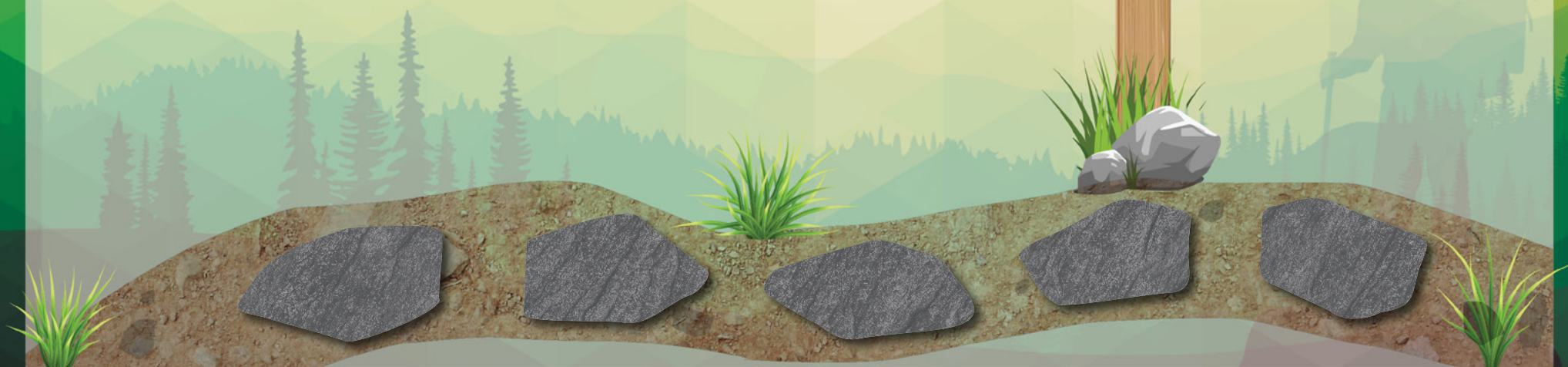
The number and variety of available climate change adaptation tools and resources related to land use, regional and urban planning can be overwhelming, making it difficult to find the resources best suited to your specific needs. The Adaptation Resource Pathway (ARP) was developed to address this challenge. The ARP is **not** a comprehensive list of planning related adaptation resources, but rather, key resources (vetted by climate change adaptation practitioners) selected based on their relevance and applicability to advancing adaptation in Canada.

This ARP is focused on **Land Use, Regional and Urban Planning** and is geared towards all planning practitioners interested in climate change adaptation. It was developed by Climate Risk Institute (CRI) in collaboration with various partners, advisors and reviewers.

Other Adaptation Resource Pathways that are available include:

- 1) **Climate Change Adaptation Resource Pathway**, focused on adaptation broadly and geared towards all climate change practitioners.
- 2) **Engineering and Built Infrastructure ARP**, primarily for engineers and others involved in built infrastructure.
- 3) **Natural and Nature-based Solutions ARP**, for all practitioners and decision-makers who work on climate change adaptation.

The ARP is an interactive resource!
Click on the Scenic Lookout icon and
signpost below to try it out.





Contribute to this ARP

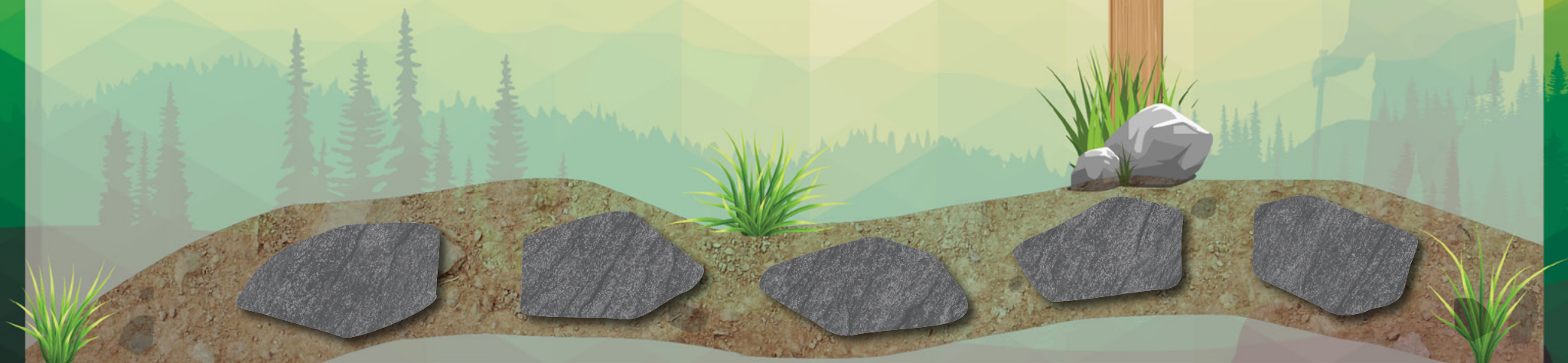
If you have suggestions on how to keep this pathway “groomed” for future explorers, we want to hear from you! More specifically...

- Did you find the ARP useful?
- How could the ARP be improved?
- Do you have feedback on the resources currently included?
- Do you have suggestions on resources that could be included in the next version of the ARP?*

*The ARP will be updated annually. Note the Version No. and date on the bottom of Page 1.

Please share your thoughts via adaptation@nrcan-rncan.gc.ca.

The ARP is an interactive resource!
Click on the Scenic Lookout icon and
signpost below to try it out.



EXPLORE: KEY TERMS

Explore various resources to help build your knowledge on different aspects of adaptation, including reports, guidebooks and toolkits. If you are new to adaptation or just need a refresher, explore the key terms, frequently asked questions and resources in this section. Also check out the general *Climate Change ARP*, which has an extended list of Key Terms, FAQ's and general climate change adaptation resources.



EXPLORE: FAQs

Although climate change adaptation is not a new concept, some land use, regional and urban planners may not be familiar with climate change risks, impacts and adaptation approaches. Below you will find some Frequently Asked Questions (FAQs) that those new to the field are asking.



EXPLORE: RESOURCES

This section includes a number of resources to help you build your knowledge on key adaptation concepts, tools and best practices from a planning perspective. Use the headings below to explore by theme and check out the topic specific resources heading which has additional sub-topics to explore!



EXPLORE: RESOURCES

This section includes a number of resources to help you build your knowledge on key adaptation concepts, tools and best practices from a planning perspective. Use the headings below to explore by theme and check out the topic specific resources heading which has additional sub-topics to explore!



EXPLORE: RESOURCES

This section includes a number of resources to help you build your knowledge on key adaptation concepts, tools and best practices from a planning perspective. Use the headings below to explore by theme and check out the topic specific resources heading which has additional sub-topics to explore!



EXPLORE: RESOURCES

This section includes a number of resources to help you build your knowledge on key adaptation concepts, tools and best practices from a planning perspective. Use the headings below to explore by theme and check out the topic specific resources heading which has additional sub-topics to explore!



EXPLORE: RESOURCES

This section includes a number of resources to help you build your knowledge on key adaptation concepts, tools and best practices from a planning perspective. Use the headings below to explore by theme and check out the topic specific resources heading which has additional sub-topics to explore!



EXPLORE: RESOURCES

This section includes a number of resources to help you build your knowledge on key adaptation concepts, tools and best practices from a planning perspective. Use the headings below to explore by theme and check out the topic specific resources heading which has additional sub-topics to explore!



EXPLORE: RESOURCES

This section includes a number of resources to help you build your knowledge on key adaptation concepts, tools and best practices from a planning perspective. Use the headings below to explore by theme and check out the topic specific resources heading which has additional sub-topics to explore!



EXPLORE: RESOURCES

This section includes a number of resources to help you build your knowledge on key adaptation concepts, tools and best practices from a planning perspective. Use the headings below to explore by theme and check out the topic specific resources heading which has additional sub-topics to explore!



EXPLORE: RESOURCES

This section includes a number of resources to help you build your knowledge on key adaptation concepts, tools and best practices from a planning perspective. Use the headings below to explore by theme and check out the topic specific resources heading which has additional sub-topics to explore!

1. [Community Energy Explorer](#)

This web-based resource is designed to provide communities and citizens with information and tools for local energy planning and carbon emission mitigation. The long-term goals of the Community Energy Explorer are to provide a platform of up-to-date resources for community energy planning, and the development of new and innovative engagement tools around energy.

Use this resource to: support local energy planning and carbon emission mitigation.

• **Source:** Collaborative for Advanced Landscape Planning



Most applicable to communities in British Columbia.

EXPLORE: RESOURCES

This section includes a number of resources to help you build your knowledge on key adaptation concepts, tools and best practices from a planning perspective. Use the headings below to explore by theme and check out the topic specific resources heading which has additional sub-topics to explore!



EXPLORE: RESOURCES

This section includes a number of resources to help you build your knowledge on key adaptation concepts, tools and best practices from a planning perspective. Use the headings below to explore by theme and check out the topic specific resources heading which has additional sub-topics to explore!



LEARN: COURSES & MODULES

Learn and build your knowledge and expertise on climate change adaptation by enrolling in professional development courses, training programs and formal education.



LEARN: TUTORIALS & WORKSHOPS

Learn and build your knowledge and expertise on climate change adaptation by enrolling in professional development courses, training programs and formal education.



LEARN: CERTIFICATES

Learn and build your knowledge and expertise on climate change adaptation by enrolling in professional development courses, training programs and formal education.



LEARN: VIDEOS

Learn and build your knowledge and expertise on climate change adaptation by enrolling in professional development courses, training programs and formal education.



NETWORK: COMMUNITIES OF PRACTICE

Stay connected with others working in climate change adaptation by tapping into communities of practice and reaching out to climate organizations and experts through established networks and programs. Building and sustaining these personal connections is an important part of tackling complex, cross-cutting issues like climate change.



NETWORK: REGIONAL AND NATIONAL PROGRAMS

Stay connected with others working in climate change adaptation by tapping into communities of practice and reaching out to climate organizations and experts through established networks and programs. Building and sustaining these personal connections is an important part of tackling complex, cross-cutting issues like climate change.



NETWORK: KEY NETWORKS

Stay connected with others working in climate change adaptation by tapping into communities of practice and reaching out to climate organizations and experts through established networks and programs. Building and sustaining these personal connections is an important part of tackling complex, cross-cutting issues like climate change.



ACT: CASE STUDIES & OTHER REAL-WORLD EXAMPLES

What better way to learn how to implement climate change adaptation than to look at real-world examples and “how-to” reference material. Have a look at some of the ways others are taking action and implementing climate change adaptation on-the-ground.



ACT: RESOURCES FOR IMPLEMENTATION

What better way to learn how to implement climate change adaptation than to look at real-world examples and “how-to” reference material. Have a look at some of the ways others are taking action and implementing climate change adaptation on-the-ground.



REFLECT: MONITORING AND EVALUATION

Now it's time to reflect on your journey to date and take stock of the progress you've made, including successes, challenges and learning ways to measure the impact of your climate change adaptation actions.



CLIMATE RISK INSTITUTE

The ARPs were supported by Natural Resources Canada's
[Building Regional Adaptation Capacity and Expertise \(BRACE\)](#) Program



Natural Resources
Canada

Ressources naturelles
Canada

Canada

For more information about the Adaptation Resource Pathway (ARP) Series or to provide feedback,
please contact: adaptation@nrcan-rncan.gc.ca

The Land Use, Regional and Urban Planning ARP was developed by Climate Risk Institute (CRI) in collaboration with various partners, advisors and reviewers including members of the Resource Pathways Committee who graciously volunteered their time and expertise to provide insight and recommendation throughout the development of this document. Thank you to all of the committee members: Jan Sotocinal; Grant Pearsell; Connor Smith; Tara Lynne Clapp; Carla Stewart; David Hendrickson; Camille Lefrançois; Ellen Enns; Vanessa Wellsch; Brenda Wallace; Kanchan Ghadge; Paul Kraehling; Jenna Davidson; Michael Sullivan; Eric Rapaport; and, Olimpia Pantelimon.